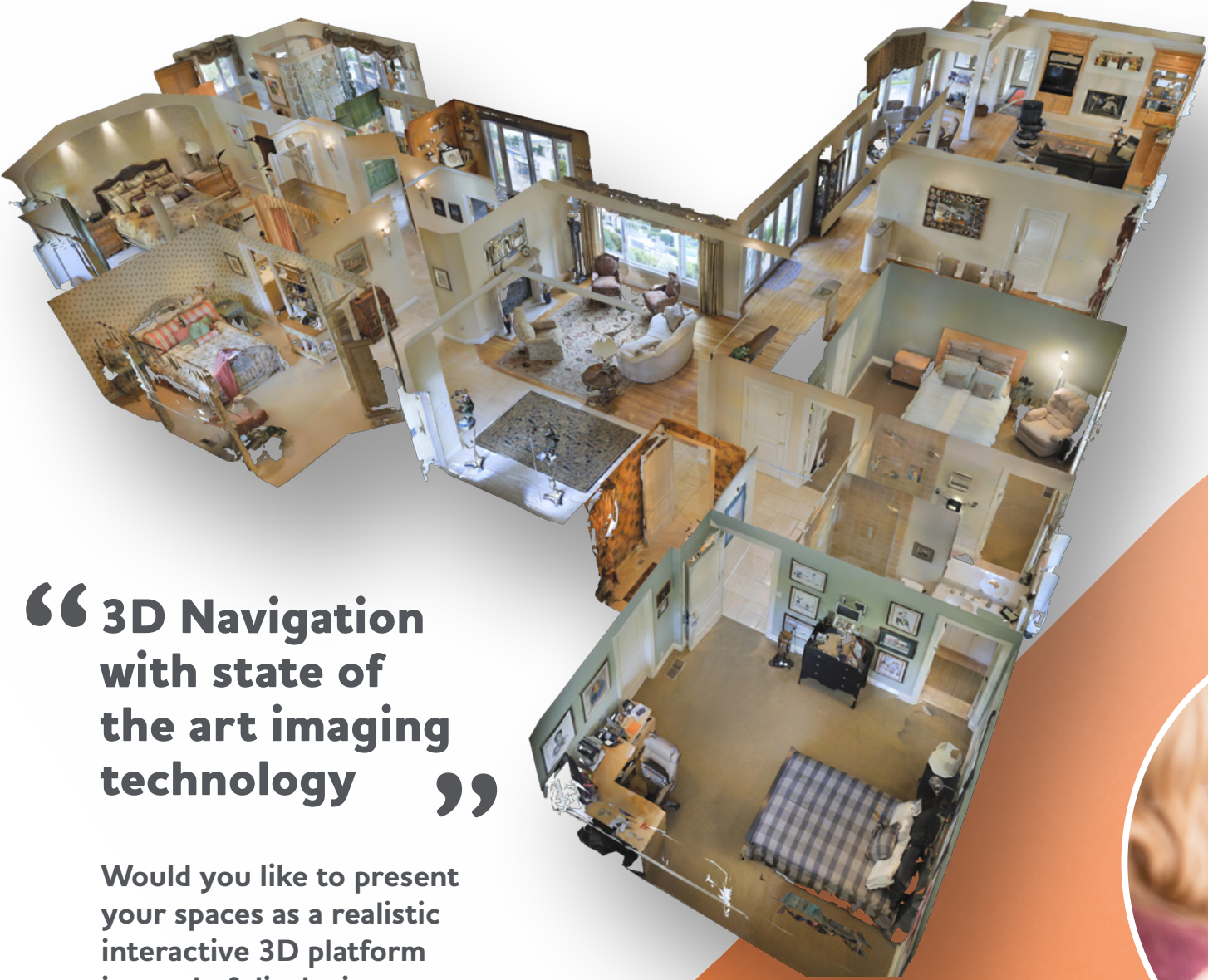




**REALISTIC &
INTERACTIVE
SPACES,**
COMPATIBLE
WITH 3D AND
VIRTUAL
REALITY





“3D Navigation with state of the art imaging technology”

Would you like to present your spaces as a realistic interactive 3D platform instead of displaying photos ?

We transform images of indoor and outdoor spaces, created with 3D filming technology, into an interactive platform, compatible with 3D and Virtual Reality.

We create a 3D reconstruction of your spaces by merging the images attained with cutting-edge technology.

The spaces can visit interactively from anywhere with internet access.

In which environments we can apply 3D realistic capturing technology ?

- Hotel & Event Spaces
- Architecture & Civil Engineering
- Commercial Real Estate
- Historical Places
- Arts & Culture
- Restaurant & Bars
- Insurance
- Facilities Management
- Sport & Recreation
- Transportation

“What can be done on this interactive 3D platform?”



Have an exciting realistic 3D virtual tour of your spaces



Share accurate schematic floor plans with your customers.



With 3D Reality Capture technology, unlike 360 degree imaging, provides the closest experience to actually being there.



View the perspective from any chosen point as if you are in the space.



Take a tour of the space with a virtual reality equipment.



Direct your customers around the space with smart labels.



Share your space on Google Maps for visitors.



Your 3D models are stored on Matterport cloud servers and available for access 7/24.



Share your 3D models, on your website or any platform you choose, as a link.

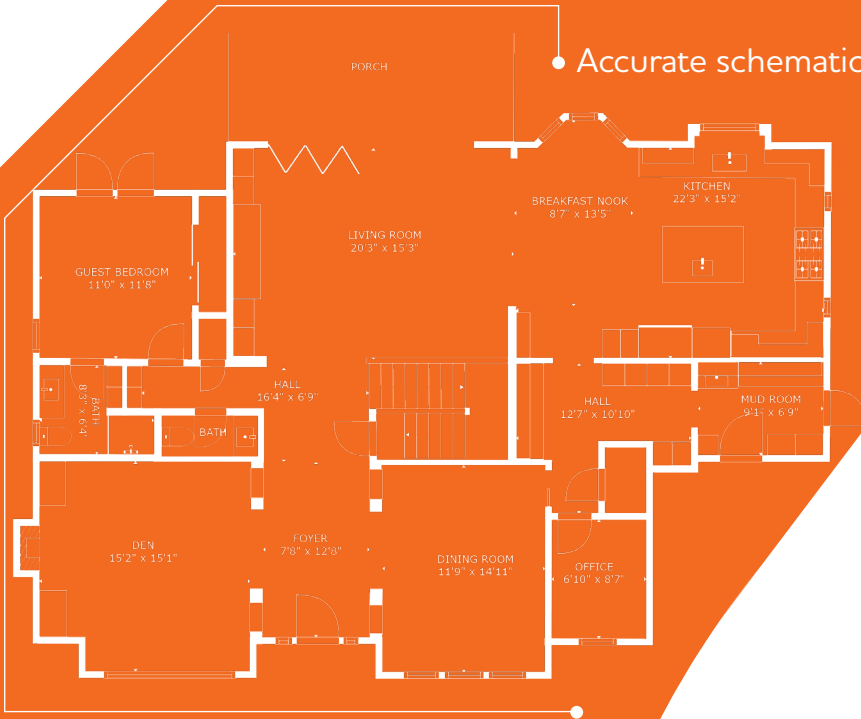


Enable customers to plan their events by viewing the 3D realistic model without having to visit the space.





• Accurate schematic floor plan



/surveyhands

www.surveyhands.com



info@surveyhands.com

Halıcıoğlu Mh. Taşçı Akif Sk.
No: 14 D: 4 Beyoğlu / İstanbul

M. +90 (534) 677 46 00
T. +90 (212) 369 84 29

 **Surveyhands®**
Engineering